

# LUSTER METALLIC

KEY RESIN COMPANY



Key Resin Luster Metallic is a highly decorative coating system with a bright metallic finish. Metallics are installed using a variety of techniques resulting in unique, one-of-a-kind, artistic results. High gloss, satin and matte finish options are available.

## ADVANTAGES

- Unique signature designs
- Excellent clarity and color
- Low odor during application and cure
- Multiple effects and colors possible
- Easy to maintain
- Available in 'fast cure' systems

## TYPICAL USES

- Residential, interiors and garage
- Office spaces
- Hospitality and restaurant use
- Commercial areas
- Lobbies and corridors
- Light industrial applications

Key Resin Company provides this color guide for preliminary color selection only. Please refer to a physical sample prior to making a final selection. Contact your local Key Resin Representative for assistance or contact the main office.



(888) 943-4532

KEYRESIN.COM



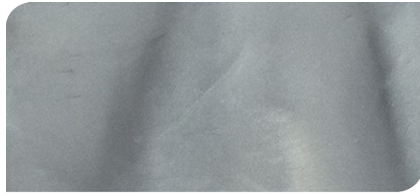
# LUSTER METALLIC

## STANDARD COLORS

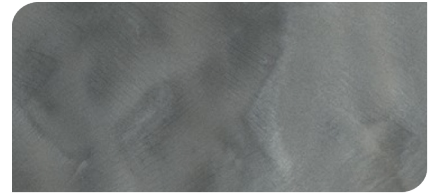
---



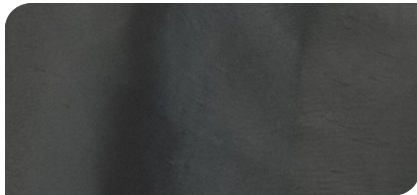
PEARL  
KLM001



DOLPHIN  
KLM002



MANATEE  
KLM003



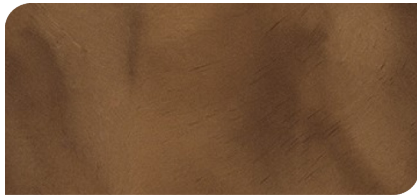
WHALE  
KLM004



GUAVA  
KLM007



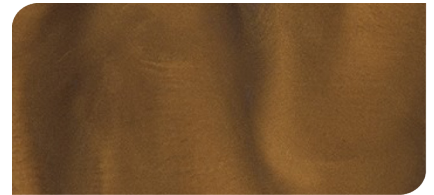
OVERCAST  
KLM008



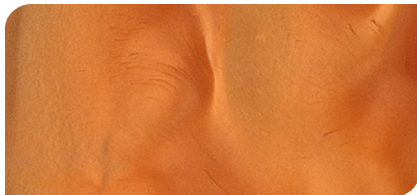
SANDAL  
KLM012



RUM  
KLM015



SHIPWRECK  
KLM016



CORAL  
KLM020



CARIBBEAN  
KLM040



MAUI  
KLM042



CUSTOM COLORS?  
*just ask!*



(888) 943-4532

KEYRESIN.COM

